



GMT MONTHLY MEMBERSHIP PROGRESS REPORT

Results as of: 6/30/2019

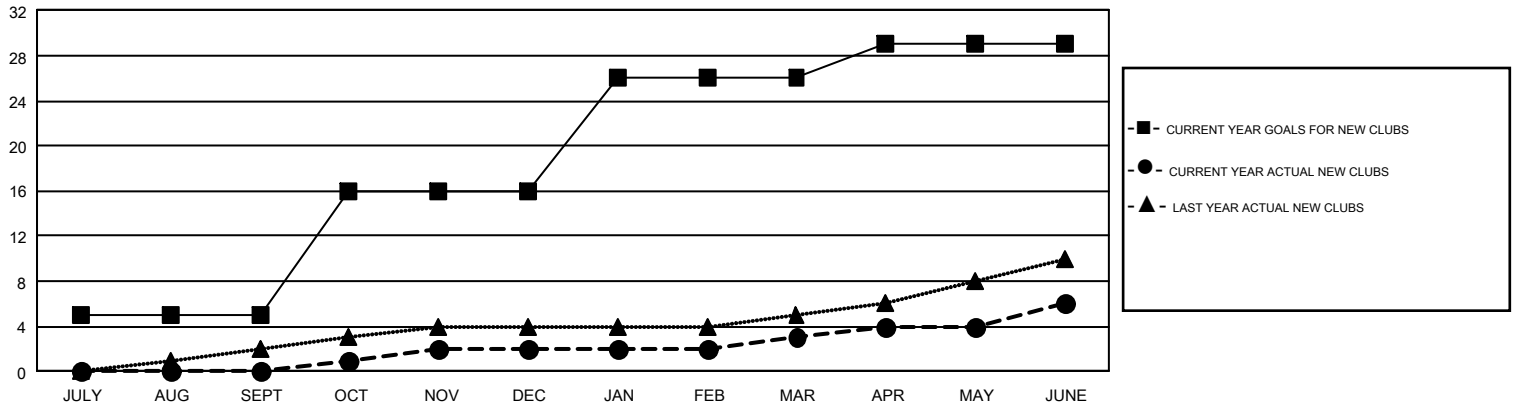
GMT Constitutional Area 1, Group D

GMT: OPEN

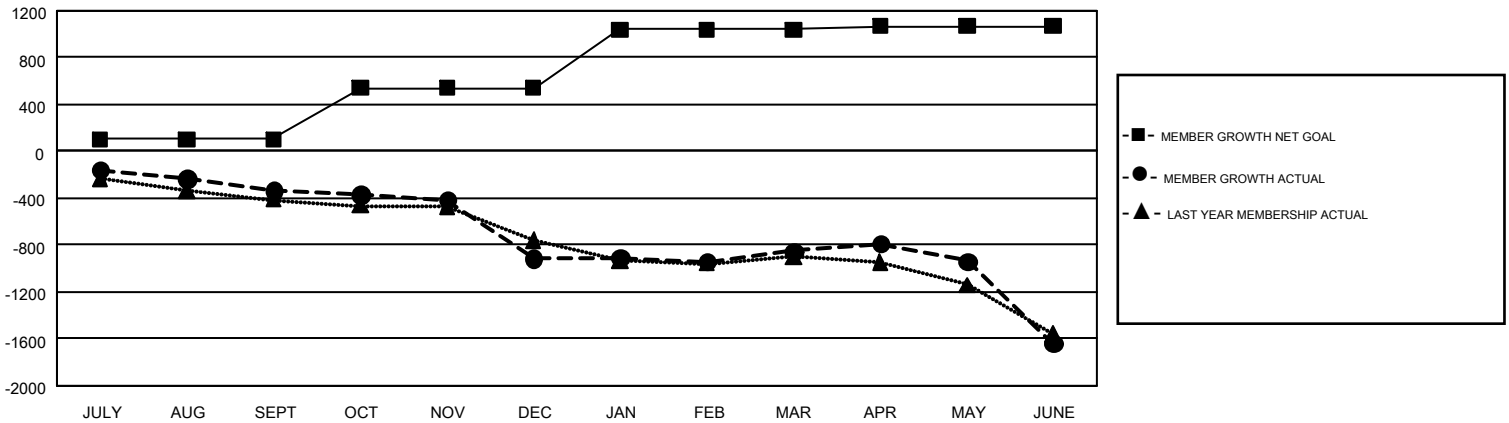
REPORT DOES NOT INCLUDE CLUBS IN UNDISTRICTED AREAS.

Clubs				Members			
RESULTS FOR 2018-2019				RESULTS FOR 2018-2019			
QUARTER	NEW CLUB GOAL	NEW CLUBS	DROPPED CLUBS	QUARTER	MEMBER GROWTH NET GOAL	MEMBER GROWTH ACTUAL	DROPPED MEMBERS ACTUAL (including transfers)
JULY/AUG/SEPT	5	0	12	JULY/AUG/SEPT	101	806	1,024
OCT/NOV/DEC	11	2	7	OCT/NOV/DEC	442	985	1,444
JAN/FEB/MAR	10	1	6	JAN/FEB/MAR	498	971	820
APR/MAY/JUNE	3	3	13	APR/MAY/JUNE	29	1,013	1,715

GOALS AND ACTUAL NEW CLUBS CUMULATIVE



GOALS AND ACTUAL MEMBERS CUMULATIVE



DROPPED CLUBS: 38	984 CLUBS OF 1,517 ADDED 1 OR MORE NEW MEMBERS	GENDER DISTRIBUTION MALE 33,888 (73.52%) FEMALE 12,205 (26.48%)
DROPPED MEMBERS DECEASED 638 CLUB CANCELLED 182 OTHER 4,181 <hr/> TOTAL 5,001	CLICK HERE FOR CUMULATIVE MEMBERSHIP DATA	TOTAL FAMILY UNIT MEMBERS 9,158 FAMILY MEMBERS PAYING HALF DUES 4,640